

LOCATION & ACCOMMODATION

HOTEL WEITZER (Conference room 'Styria')

Grieskai 12 - 16, 8020 Graz; <https://www.hotelweitzer.com>

Accommodation

It is reserved a limited number of rooms at special rates for course participants at Hotel Weitzer. A code for application will be provided along with confirmation of registration.

COURSE FEES

Part I (Tumour Pathology)	June 5 – 7, 2024	€ 670,00
Part II (Non-tumour Pathology)	June 9– 11, 2024	€ 670,00
Whole course (Part I & II)		€1.000,00

Course fees include daily lunch buffets and coffee breaks (except on course free Sunday), free WLAN, online course material, printed course manuals for booked course part(s), as well as the course certificate.

Participants as well as accompanying persons are welcome to join SOCIAL EVENTS:

Welcome Evening Buffet	June 5, 2024	€ 50,00*
Excursion (at course free Saturday) (day trip by bus in the surroundings of Graz; meals included)	June 8, 2024	€ 100,00**
Farwell Dinner	June 10, 2024	€ 50,00*

*Fee accompanying persons, participants free of charge;
**Fee participants & accompanying persons

CONTACT / REGISTRATION & PAYMENT

Course office: Helmut Popper
Diagnostic & Research Institute of Pathology –
Medical University of Graz
Neue Stiftingtalstraße 6, 8010 Graz, Austria
E-mail: helmut.popper@medunigraz.at

Course website with online-registration form:

<https://pathologie.medunigraz.at/postgraduate-course-lung-pleural-diseases>

Online registration will be open from November 14, 2024.

Limited seating! Early registration recommended.

Seating at the course is on a first come, first served basis and will definitely be assigned, based on the date of payment of the course fee. Course invoices will be sent starting in January 2024



Medical University of Graz

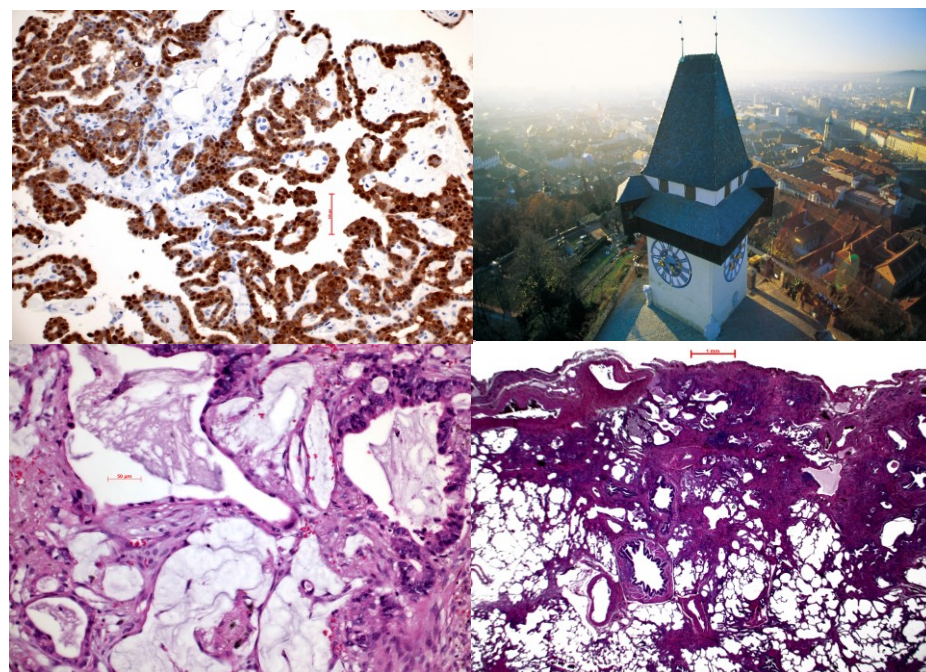
POSTGRADUATE COURSE

LUNG & PLEURAL DISEASES

WITH VIRTUAL MICROSCOPY

Part I (Tumour Pathology) June 5 – 7, 2024
Part II (Non-tumour Pathology) June 9 – 11, 2024

Graz, Austria



Course Director & Faculty
Helmut Popper, Graz, Austria
Guest Faculty

Anja Roden, Mayo Clinic, Rochester, U.S.A.

Faculty

Ulrike Gruber - Moesenbacher, Feldkirch, Austria

COURSE OBJECTIVES

This two-part course is designed as live event and will run for six days. Covered topics are

- common and rare lung and pleural diseases
- biopsy and cytology of tumor and non-tumor cases
- molecular investigations

Each part will consist of lectures, case teaching and discussions.

**WITH VIRTUAL
MICROSCOPY**

With confirmation of payment you will receive an email notification providing the link and password required to study approximately 700 cases. You may also opt to view the cases online during the course. Free WLAN internet access will be provided.

For those who prefer a direct and personal view of the glass slides some microscopes will be available at the course location.

This course is designed for trainees as well as for experienced colleagues. The course language is English.

Course parts can be booked separately.

PROGRAM

Part I (Tumour Pathology) June 5 – 7, 2024

Tumor Pathology, starting June 5th, 2024 will cover not only common lung tumors, but also rare epithelial and mesenchymal tumors, preneoplastic lesions, and pleura tumors including mesothelioma; molecular pathology and aspects of immune-oncology will be discussed too. Biopsy diagnosis will be done using an interactive internet based system for digital microscopy.

Part II (Non-tumour Pathology) June 9 – 11, 2024

Non-tumor Pathology, starting June 9th, 2024 will cover fibrosing pneumonias, smoking related lung diseases, metabolic diseases, pneumoconiosis, vascular diseases, infections and more; pediatric lung diseases will be included

Case presentations of interstitial lung diseases combined with biopsy interpretation will be included.

The impact of molecular pathology and immunohistochemistry in lung pathology will be discussed during the conference for each part.

Furthermore challenging cases, including infectious diseases, contributed by the participants will be discussed during the course.

COURSE DIRECTOR & FACULTY

Helmut H. Popper Diagnostic & Research Institute of Pathology, Medical University Graz, Austria

Anja Roden Mayo Clinic Laboratories, Institute of Pathology, Mayo Clinic, Rochester, MN, U.S.A.

Ulrike Gruber - Moesenbacher Teaching Hospital, Feldkirch, Austria

ACCREDITATION / COURSE CERTIFICATE

European CME credits by the EACCME* (European Accreditation Council for Continuing Medical Education) as well as **DFP credit points by the Austrian Medical Chamber** have been requested. Accreditation process still in progress.

* Recognised by the American Medical Association as well as by the Royal College of Physicians and Surgeons of Canada

COURSE SCHEDULE

Part I will start on Tuesday, June 5 at 8.00 am with on-site registration and will continue with scientific program at 8.30 am.

End of Part I is on Friday, June 7 at 6.00 pm.

Part II will start on Sunday, June 9 at 8.00 am and will end on Tuesday, June 11 at 4.00 pm.

On-site registration for those who take place in Part II only 10 minutes before the start of course part II.

OVERVIEW HOW TO GET TO GRAZ BY CAR, TRAIN, OR PLANE

<https://www.graztourismus.at/en/travel-and-transport>

SCHEDULED FLIGHTS TO GRAZ

<https://www.flughafen-graz.at>

MORE INFORMATION ABOUT GRAZ

<https://www.graztourismus.at>

MORE QUESTIONS?

Please contact the organizers:

[helmut.popper\[a\]medunigraz.at](mailto:helmut.popper[a]medunigraz.at) or ugruberm1@outlook.com